

# Argosy Minerals Limited

## EV Materials

Rating  
**SPECULATIVE BUY**

Price Target  
**A\$0.85**

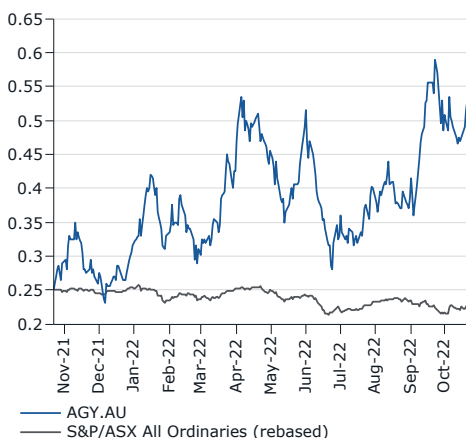
**AGY-ASX**

Price  
**A\$0.54**

### Market Data

52-Week Range (A\$) :	0.22 - 0.61
Market Cap (A\$M) :	750.3
Shares Out. (M) :	1,389.4
Enterprise Value (A\$M) :	727
NAV /Shr (A\$) :	0.85
Net Cash (A\$M) :	23.1

FYE Dec	2021A	2022E	2023E	2024E
EBITDA (A\$M)	2.0	1.2	66.8	62.5



Priced as of close of business 21 October 2022

AGY is a lithium development company progressing the Rincon Lithium Project in Argentina. It plans to commission its 2ktpa plant in 2022 before moving to development of an incremental 10ktpa project. It also owns the Tonopah early stage lithium prospect in Nevada, US.

**Timothy Hoff** | Analyst | Canaccord Genuity (Australia) Ltd. | THoff@cgf.com | +61.2.9263.2745  
**Reg Spencer** | Analyst | Canaccord Genuity (Australia) Ltd. | rspencer@cgf.com | +61.2.9263.2701  
**James Farr** | Associate Analyst | Canaccord Genuity (Australia) Ltd. | jfarr@cgf.com | +61.2.9263.2714

## The Rincon ramp-up

### No merchant ships at 4,000m above sea level but Argosy making way

Argosy Minerals (AGY-ASX) is a lithium development company in the advanced stages of commissioning Stage 2 of its 77.5%-owned Rincon Lithium project in Argentina. This will see Argosy move to the status of producer in 2022, with 2ktpa battery grade lithium carbonate capacity. While initial volumes are small, it demonstrates the purposeful steps AGY has made to de-risk and produce from the Rincon asset. Stage 3 will see AGY move to 90% ownership and add an incremental 10ktpa of production. We set an \$0.85 price target and rate the stock a SPECULATIVE BUY given production is yet to be ramped up at the operation.

### Three-stage development de-risks process development

AGY's project earn-in is based on a three-stage development, with Stage 2 in the early stages of commissioning (Stage 1 was a pilot plant). Once Stage 2 is in production it will become one of few new greenfields lithium assets to produce in 2022. Stage 3 envisages an incremental 10kt of production with AGY moving to 90% ownership. AGY's plant is based on a process designed by AGY's chemical engineer Pablo Alurralde, who has over 17 years of lithium brine experience and over 30 years of chemical process engineering. He was listed as an inventor on an FMC patent (now Livent) for the "Recovery of Lithium values from sodium saturated brine". Mr Alurralde and related parties own the remaining 22.5% of the project, and he is president of the Rincon JV Project and the key in-country manager for development of the project.

### EBITDA profile improves significantly at spot, adding FCF potential

AGY currently has no offtake agreements covering its production. This means that once in production, AGY should be able to place product at close to spot market rates. On our estimates we believe AGY will ramp up through 1H23 and hit nameplate production at the end of 2023. We forecast CY24 (2kt LC) EBITDA of A\$63m; however, if we were to run spot (US\$70,000/t) this would lift to A\$147m. Given the lower sustaining capital at brine operations this translates to A\$52m in operating cash flow (A\$110m at spot), which provides a strong base for growth.

### Resource exploration and optionality

AGY has a comparatively small Resource of 245kt vs peers (Figure 13); however, the resource estimate was limited by the depth of drilling where the cut off was ~102m. Drilling is underway to test depth extensions to 300m and beyond and has an exploration target of an incremental 262-479kt LCE. We assume an additional 100kt is extracted over the current resource; however, if the mid-point of the exploration target is delivered we believe the resource could support an expansion of its operations.

### Price target and recommendation

Our price target of \$0.85 is set at 50:50 risk-adjusted NPV and five-year average EV/EBITDA with a multiple of 7.5x. We use a 10% discount rate and assume a 32-year project life with costs of US\$6,543/t Li<sub>2</sub>CO<sub>3</sub>, capex of US\$306m. We use long-run Li<sub>2</sub>CO<sub>3</sub> prices of US\$22,500/t and AUD/USD of 0.75. We also assign a nominal A\$25m valuation for Tonopah and A\$100m for expansion potential at Rincon.

## Contents

AGY in charts.....	3
Executive summary .....	4
The Rincon Lithium Project .....	5
Tonopah Project.....	13
Valuation .....	15
Board of directors and senior management .....	16
Risks .....	17
Financial summary .....	18

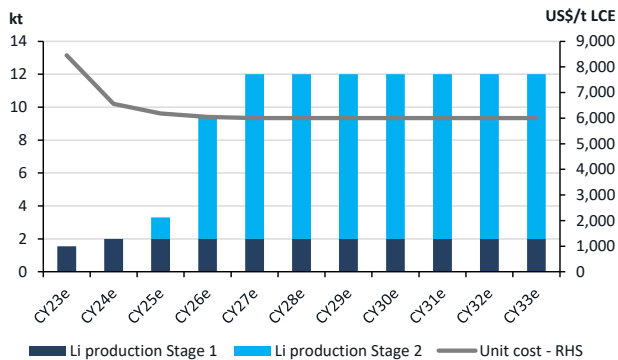
## AGY in charts

**Figure 1: First lithium coming off the vacuum filter at the 2ktpa facility. The company expects production and product quality to ramp up over the coming months**



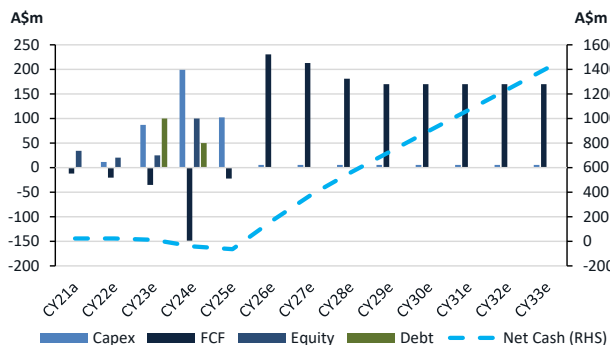
Source: Company reports

**Figure 3: CG2 production and unit costs**



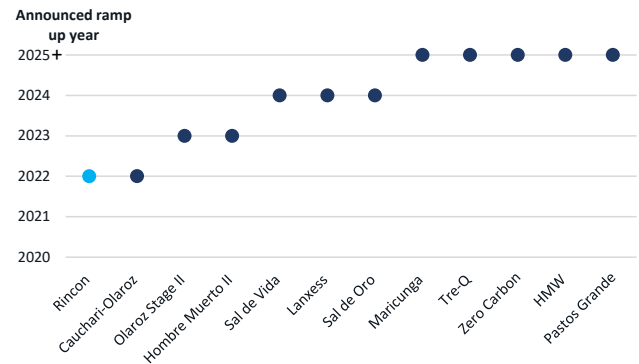
Source: Canaccord Genuity estimates

**Figure 5: CGe capex, FCF, cash, net cash, debt and equity**



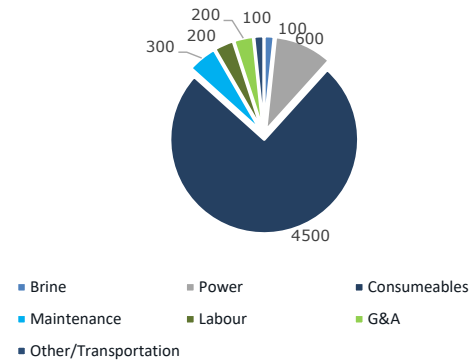
Source: Company reports, Canaccord Genuity estimates

**Figure 2: AGY to become one of few new brine producers globally over the next two years**



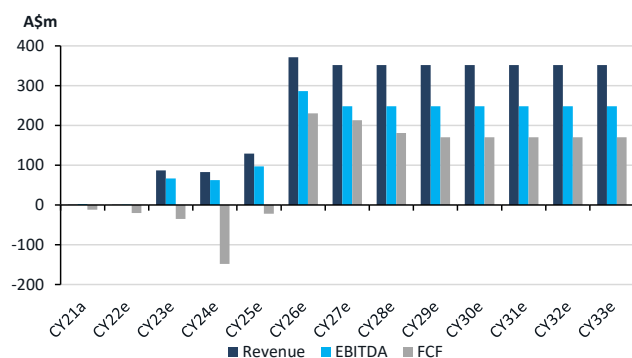
Source: Company reports, Canaccord Genuity estimates

**Figure 4: LOM cash costs 2030 (US\$4,800/t)**



Source: Canaccord Genuity estimates

**Figure 6: CGe revenue, EBITDA, FCF**



Source: Company reports, Canaccord Genuity estimates

## Executive summary

AGY is a lithium development company in advanced stages of commissioning Stage 2 of its 77.5%-owned Rincon Lithium project in Argentina. This will see Argosy move to the status of producer in 2022, with 2ktpa battery grade lithium carbonate capacity. While initial volumes are small, it demonstrates the purposeful steps AGY has made to de-risk and produce from the Rincon asset. Stage 3 will see AGY move to 90% ownership and add an incremental 10ktpa of production. We set an \$0.85 price target and rate AGY a SPEC BUY given production is yet to be ramped up at the operation.

### Three stage development derisks process development

AGY's project earn in is based upon a three-stage development, with Stage 2 in the early stages of commissioning (Stage 1 was a pilot plant). Once Stage 2 is in production it will become one of few new greenfields lithium assets to produce in 2022. Stage 3 envisages an incremental 10kt of production with AGY moving to 90%. AGY's plant is based upon a process designed by AGY's chemical engineer Pablo Alurralde, who has over 17 years of lithium brine experience and over 30 years of chemical process engineering. He was listed as an inventor on an FMC patent (now Livent) for the "Recovery of Lithium values from sodium saturated brine". Mr Alurralde and related parties own the remaining 22.5% of the project, and he is president of the Rincon JV Project and the key in country manager for development of the project.

### EBITDA profile improves significantly at spot, adding FCF potential

AGY currently has no offtake agreements covering its production. This means that once in production, AGY should be able to place product at close to spot market rates. On our estimates we believe AGY will ramp up through 1H23 and hit nameplate production at the end of 2023. We forecast CY24 (2kt LC) EBITDA of A\$63m; however, if we were to run spot (US\$70,000/t) this would lift to A\$145m. Given the lower sustaining capital at brine operations this translates to A\$50m in operating cash flow (A\$108m at spot) which provides a strong base for growth.

### Resource exploration and optionality

AGY has a comparatively small Resource of 245kt vs peers (Figure 13); however, the resource estimates was limited by the depth of drilling where the cut off was ~102m. Drilling is underway to test depth extensions to 300m and beyond. AGY has an exploration target of an incremental 262-479kt. We believe if this is delineated it could extend the project life as a minimum and could allow for a higher level of output.

### Valuation breakdown

**Figure 7: SOTP valuation for AGY**

	A\$m	EQUITY	RISK ADJ.	A\$m	DILUTED/SH
Rincon	1532	90%	80%	1103	\$0.79
Tonopah	25			25	\$0.02
Expansion optionality	100			100	\$0.07
Corporate	-19			-19	-\$0.01
Net cash/(Debt)	12			12	\$0.01
<b>Total</b>				<b>1220</b>	<b>\$0.88</b>
		5 yr ave EBITDA	Multiple		
Rincon		152	7.5	1142	\$0.82
				NAV 50%	\$0.44
				EV/EBITDA 50%	\$0.41
<b>TOTAL</b>				<b>Target</b>	<b>A\$0.85</b>

Source: Canaccord Genuity estimates

# The Rincon Lithium Project

## Location

The Rincon lithium project is located in Salar del Rincon, Salta Province, Argentina. Salar del Rincon is situated in the "Lithium triangle" which hosts some of the world's largest lithium resources. The project area covers 2,794 hectares of mining titles and mining easement landholdings. The location is connected to roads to Salta and over the boarder to the Chilean port of Antofagasta. The nearest town of Olacapato, 20km from the site, provides accommodation and other services.

**Figure 8: Rincon project is located in Lithium triangle – world's largest lithium resources**



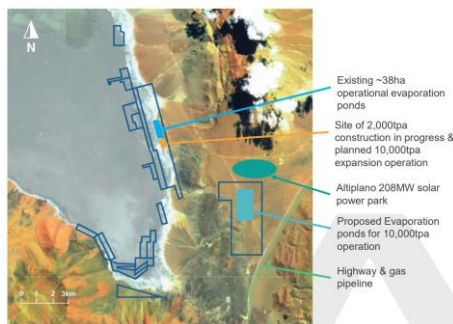
Source: Company reports

**Figure 9: A large scale solar plant has the capability of supply all of AGY's (daylight) power capacity**



Source: Company reports

**Figure 10: AGY tenement areas surrounding the Rincon Salar and location of planned infrastructure. Stage 3 requires 300Ha of ponds. AGY has 1000Ha of tenements away from the Salar for the proposed expansion**



Source: Company reports

## Infrastructure

The Rincon site has good access to power, gas and transportation. The site is accessed from Salta via San Antonio de los Cobres where the paved Route 51 terminates. Road conditions for the final ~80kms were in good condition when we visited in 2017. Commitments by the government of Salta have been made to improve roads. There is a high voltage power line running past the site and AGY intends to directly connect to Altiplano's nearby 208MW solar project which is in production. AGY estimates its 10ktpa expansion would consume 5-6MW, which means AGY (daylight) operations could largely be powered with renewables.

In late 2021, Rio Tinto acquired the [Rincon Mining Ltd business](#) (not AGY assets) ([RIO sees white at Rincon, shows some green](#)) which also occupies the same Salar. As activity increases in the area we would expect to see infrastructure improve.

To date, AGY has completed its 2ktpa brine pond system which encompasses ponds, pumping systems, piping, settling ponds and production wells. A 2ktpa processing plant is 97% complete with stages beginning commissioning at the time of this report.

## Geology and Resource

Argosy has drilled 21 bores to depths of up to 147 metres in the southeast of the Salar Del Rincon. A total of 1,662 metres of drilling has been completed to define the Resource. The bores have an average spacing of 950 metres and comprise mineral exploration bores and test-production bores.

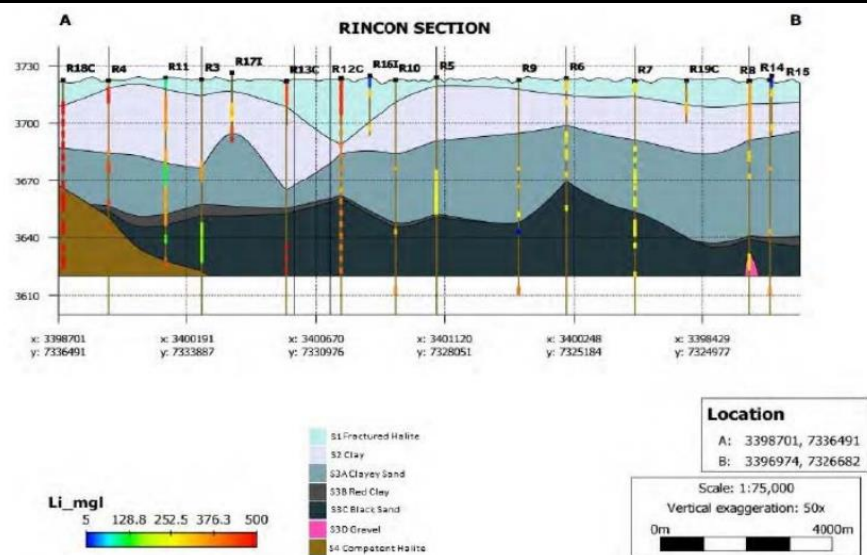
The bores have delineated an aquifer containing hypersaline brine with total dissolved solids ranging between 310,000mg/L and 350,000mg/L. The aquifer has an average lithium concentration of 325mg/L, with a maximum recorded concentration of 490mg/L.



The aquifer contains hyper-saline brine beginning near surface. It is estimated that the aquifer sequence (to a vertical depth of 102.5 metres) contains an Indicated Mineral Resource estimate of 245kt of  $\text{Li}_2\text{CO}_3$ . Initial modelling suggests 95% of the resource is able to be extracted over time.

The aquifer is bounded in the south and east by colluvial and alluvial deposits formed from the eroded material of surrounding outcrops. Fresh groundwater is likely to be associated with these, particularly the alluvial deposits where recharge may occur following rainfall events. The aquifer continues to the west and north across the salar and beyond the project's tenement boundary. Brine aquifer levels are recharged by a combination of groundwater/brine inflow from the surrounding geology and from surface water runoff.

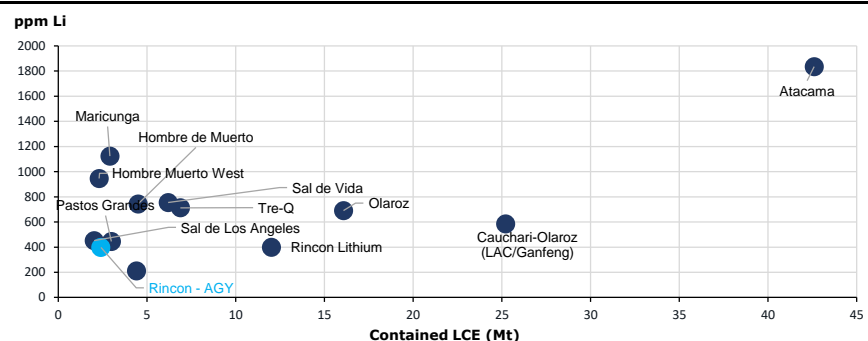
**Figure 11: Cross section of the Rincon Salar showing resource zone which remains open at depth**



Source: Company reports

The groundwater model suggests there will be changes in ground water levels beyond the boundary of the Rincon Lithium Project tenements as pumping occurs. However, in the company's modelling, the total volume of brine that is extracted has been restricted to the total volume contained within the Mineral Resource estimate for the Rincon Lithium Project. To this end AGY is currently drilling below 102m to 300m within its tenement areas with the aim of expanding its total resource.

**Figure 12: AGY's resource vs other South American brine projects**



Source: Company reports, Canaccord Genuity estimates

The Mineral resource at Rincon is made up of several brine bearing units. The Resource was cut at a total depth of 102m and does not use a cut-off grade. While brine quality matters, ultimately it is the process that unlocks value at a brine asset. Academic data we collected shows Rincon's chemical composition compared to other brine assets, which tends to have a high Mg:Li and SO<sub>4</sub>:Li ratios.

**Figure 13: AGY's Rincon Mineral Resource estimate**

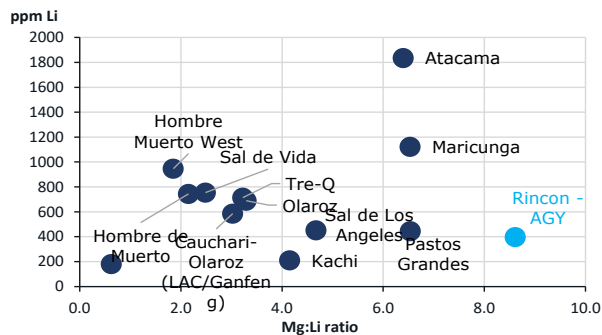
Unit	Description	Aquifer Volume Mm3	Average Thickness m	Porosity %	In Situ Brine Volume Mm3	Specific yield %	Drainable Brine Volume Mm3	Li mg/L	Li <sub>2</sub> CO <sub>3</sub> T
S1	Fractured Halite	161	10	21%	33	10%	17	334	29,772
S2	Clay	387	24	48%	185	3%	12	320	19,892
S3A	Mixed Clastics	570	35	42%	240	12%	66	313	110,493
S3B	Clay	76	5	41%	32	1%	1	333	1,361
S3C	Black Sand	360	22	38%	138	13%	48	316	80,442
S3D	Sand and Gravel	1	0	20%	0	10%	0	307	235
S4	Competent Halite	138	8	3%	4	1%	1	398	2,926
<b>Total</b>		<b>1,693</b>	<b>103</b>		<b>632</b>		<b>144</b>	<b>325</b>	<b>245,120</b>

Source: Company reports

### Exploration target builds on existing Resource

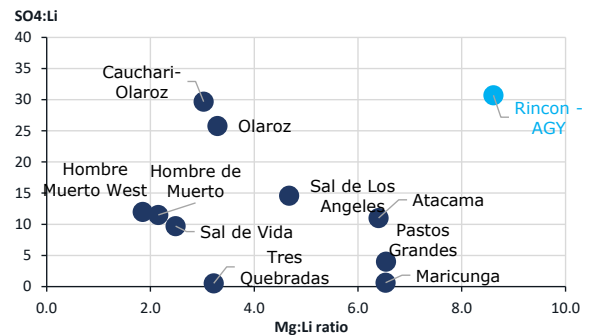
With the current Resource capable of sustaining its proposed 12ktpa plant, AGY plans to look to explore at depth and has a **current exploration target of an incremental 262-479kt LCE**. In the first instance this should lead to a longer project life; however, if a large enough resource is found, the company has flagged that an expansion could be considered. **We assume an additional 101kt LCE is produced beyond the current Resource.** We felt comfortable making this decision given recent drilling competed at Rincon and on our view of brine replacement through inflow.

**Figure 14: Lithium and Mg:Li ratio of brine deposits**



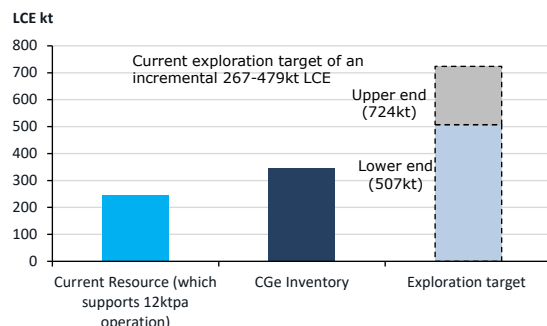
Source: Company reports

**Figure 15: SO<sub>4</sub>:Li and Mg:Li ratio of brine deposits**



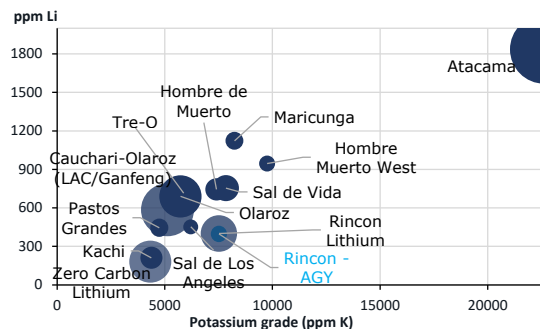
Source: Company reports

**Figure 16: Resource and exploration target**



Source: Company reports

**Figure 17: Lithium grade and potassium grade**



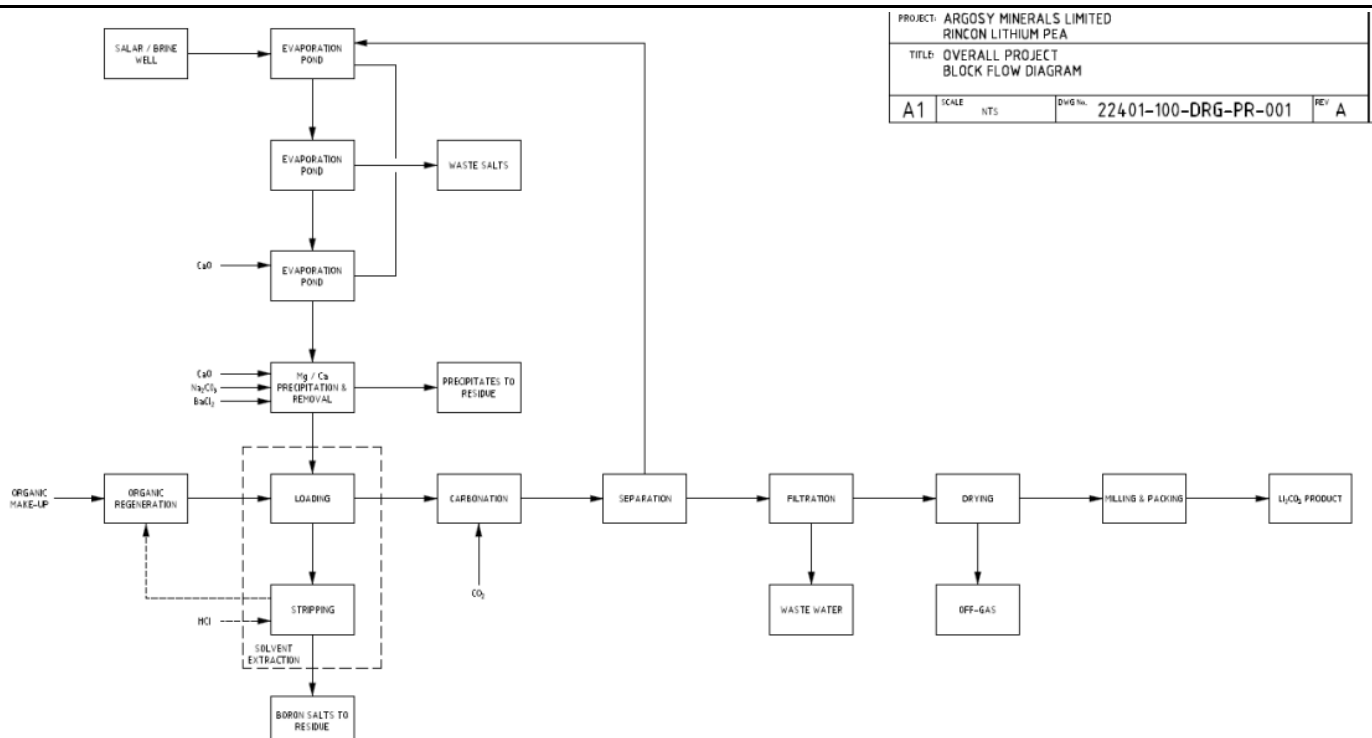
Source: Company reports

## Processing

Argosy is currently commissioning a 2ktpa plant to test its proprietary brine extraction technology to produce battery grade lithium carbonate. The basic flow sheet of the system involves.

- Brine is extracted from the well field and is pumped to the evaporation pond.
- Solar evaporation ponds concentrate the brine:
  - Salt is crystallised from the brine which traps some of the lithium.
  - Sodium and potassium levels decrease as the brine saturates and are precipitated.
  - Lime is added to the ponds to remove magnesium, sulphates and boron.
  - Sodium carbonate is added to precipitate calcium from the lime reactions.
- Lithium carbonate processing plant:
  - The saturated brine enters from the final evaporation pond.
  - Magnesium is removed through the addition of lime which precipitates as magnesium hydroxide.
  - Calcium is precipitated as calcium carbonate with the addition of soda ash.
  - Residual sulphates are precipitated with barium chloride.
  - Boron is removed through solvent extraction.
  - Carbonation is achieved with soda ash and carbon dioxide.
  - Thickening and filtration separates the precipitated lithium carbonate and then is dewatered and dried.
  - Final product is milled and packaged.

**Figure 18: Simplified process flow sheet**



Source: Company reports



### Pilot plant and 2ktpa plant construction progress

Argosy has been derisking the Rincon project through process trials and a planned small scale commercial plant. The pilot plant was able to prove AGY's process flow sheet and product battery grade lithium carbonate. In total ~30t of lithium carbonate (>99.5% Li<sub>2</sub>CO<sub>3</sub>) was produced and delivered to two customers in Japan and South Korea..

A 2ktpa plant is now being built with 97% progress made to date. Capex for the 2ktpa plant is expected to be US\$20m (excl. VAT) and has been fully funded by a capital raise in 2021. The company expects to produce battery grade lithium carbonate from the facility over the coming months.

**Figure 19: Rincon Lithium Project – 2,000tpa Site**



Source: Company reports

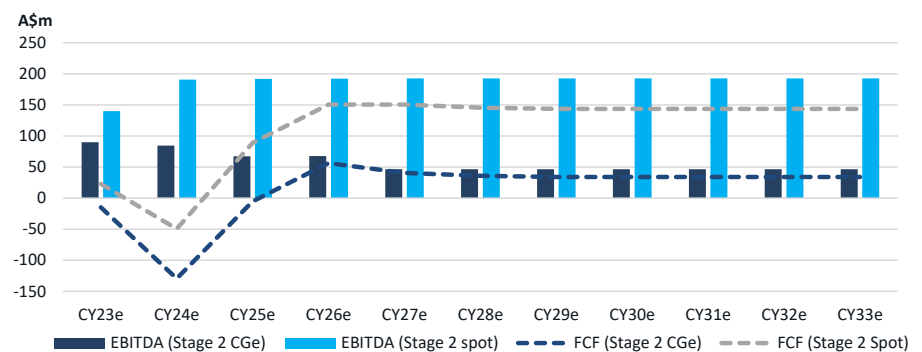
**Figure 20: Stage 2 in Construction: 2,000tpa Operation**



Source: Company reports

While the plant was intended as a commercial plant there was an element of de-risking before committing larger amounts of capital. It is likely, therefore, that it would not achieve the cost structure anticipated in the PEA. However, on our current forecasts (and spot prices of US\$70,000/t) we anticipate the project generating EBITDA/operating cash flow of A\$67m/A\$52m in CY23 and A\$63m/A\$50m in CY24. Running spot through our model would result in this lifting to A\$106m/A\$79m in CY23 and A\$145m/A\$108m in CY24.

**Figure 21: Stage 2 EBITDA (100%) and OpCF (100%) at CGe and spot pricing**



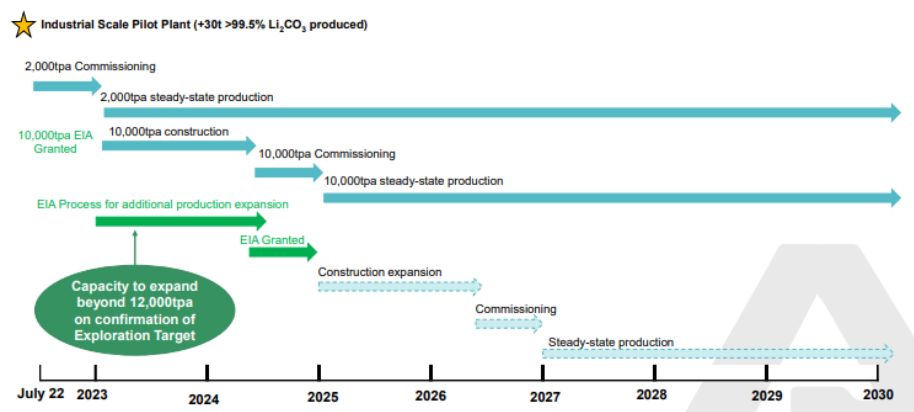
Source: Canaccord Genuity estimates

### Timing and execution for the Stage 3 expansion project

The primary focus for Argosy is completion and ramp-up of the 2ktpa plant. Following its completion, the company will assess the metrics for the 10ktpa plant and likely, in our view, lift its cost estimates upwards to account for the current inflationary environment. Once an FID has been made and funding secured we expect construction to take 2.5 years before production begins. This may provide an additional advantage in AGY being able to qualify production with offtake partners before the 10ktpa plant is operational. The primary requirement for AGY to progress its 10ktpa plant is the development of the evaporation ponds. This work may progress quickly once permitting has been approved. We anticipate the Stage 3 permits to be granted by late 2022-early 2023.

Beyond Stage 3 additional resources would be required to lift production beyond 12ktpa.

**Figure 22: AGY's production roadmap and potential expansion beyond 12ktpa**



Source: Company reports

The company completed a PEA in late 2018 for the 10ktpa plant with the key metrics highlighted vs our assumptions in Figure 24. We assume higher capex and operational costs however take the view that the project life can be extended on the view that depth extensions will result in Resource conversion.

**Figure 23: PEA vs CGe assumptions for Stage 3 of the Rincon project**

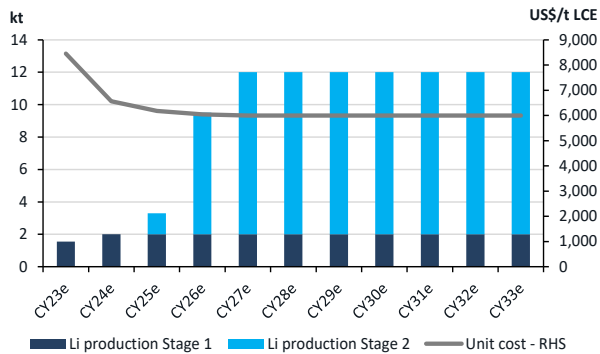
	Unit	PEA	CGe (Stage 1)	CGe (Stage 2)	CGe (Total)	% Diff
LCE Annual production	tpa	10,000	2,000	10,000	10,000	0%
Project life	years	17	32	30	32	95%
Li <sub>2</sub> CO <sub>3</sub> price	US\$/t	14,250	26,170	24,703	24,967	75%
Operating costs	US\$/t	4,645	6,632	6,523	6,543	41%
Initial capex	US\$m	141	22	284	306	117%
Pre tax NPV <sub>10</sub>	A\$m	554			1532	176%
EBITDA margin	%	61%	73%	72%	72%	18%

Source: Company reports, Canaccord Genuity estimates

## Financials

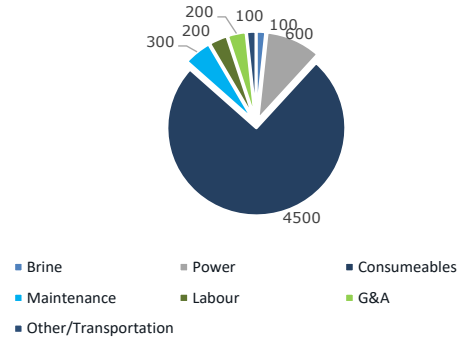
We model the assets based on the PEA after adjusting for our anticipated cost inflation on capex and opex. We reach nameplate production of 12ktpa in DecQ'26. We anticipate financing of the project with 45% equity 55% debt based on a Stage 3 capex of US\$284m.

**Figure 24: GCe Production and unit cost profile**



Source: Canaccord Genuity estimates

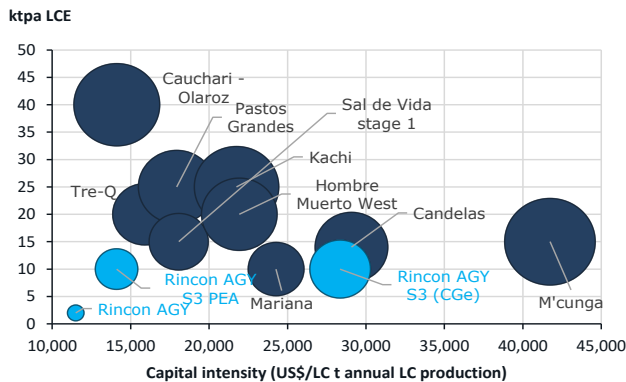
**Figure 25: Cash costs 2030 (US\$6,000/t)**



Source: Canaccord Genuity estimates

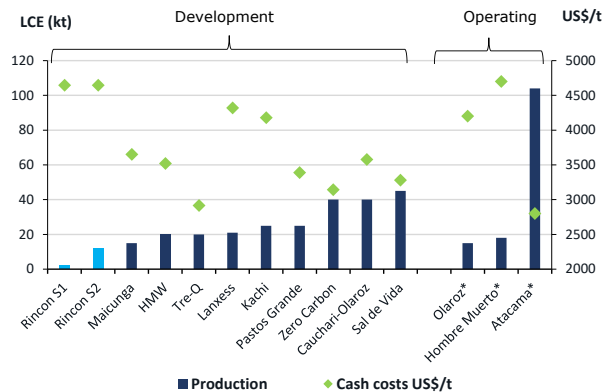
Our capital profile is shown in Figure 29 below. Once initial capital is spent, we would expect sustaining capital to remain relatively modest. Our Revenue, EBITDA and FCF forecasts show the lack in variability in the operation of brine assets. Evidence of this can be seen in AKE's Olaroz asset which has shown unit cost control despite local inflation. On a capital intensity basis Rincon screens well on the PEA estimates; however, we assume cost inflation will impact the project. We forecast a higher capital intensity of US\$28,350/tpa in our estimates.

**Figure 26: Capital intensity of brine projects**



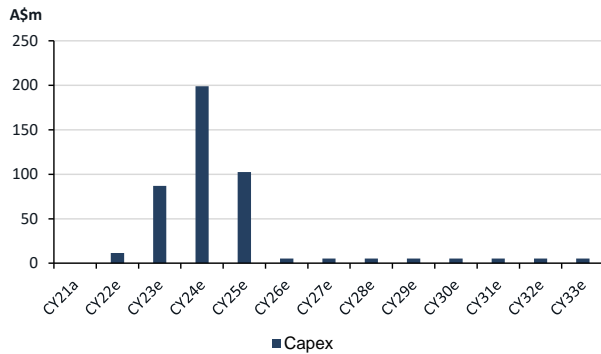
Source: Company reports

**Figure 27: Production scale and cash cost unit costs**



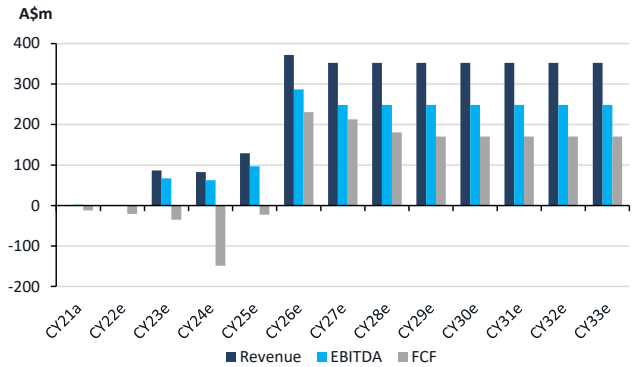
Source: Company reports

**Figure 28: CGe capex profile for Stage 2 and 3 of Rincon**



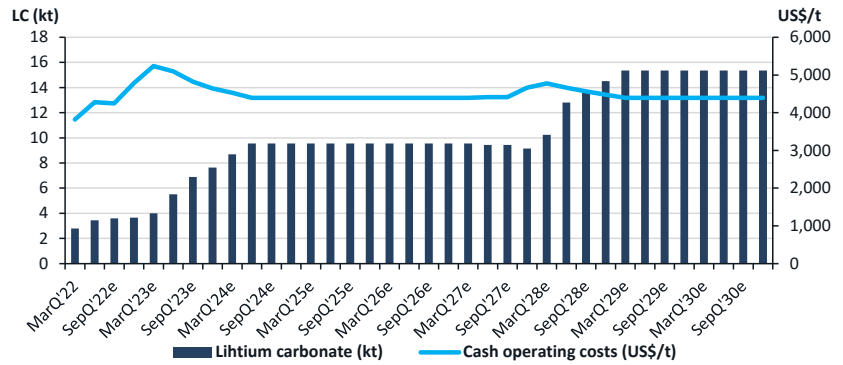
Source: Canaccord Genuity estimates

**Figure 29: CGe revenue, EBITDA and FCF for Rincon**



Source: Canaccord Genuity estimates

**Figure 30: CGe Olaroz production and unit costs**



Source: Company reports, Canaccord Genuity estimates

## Tonopah Project

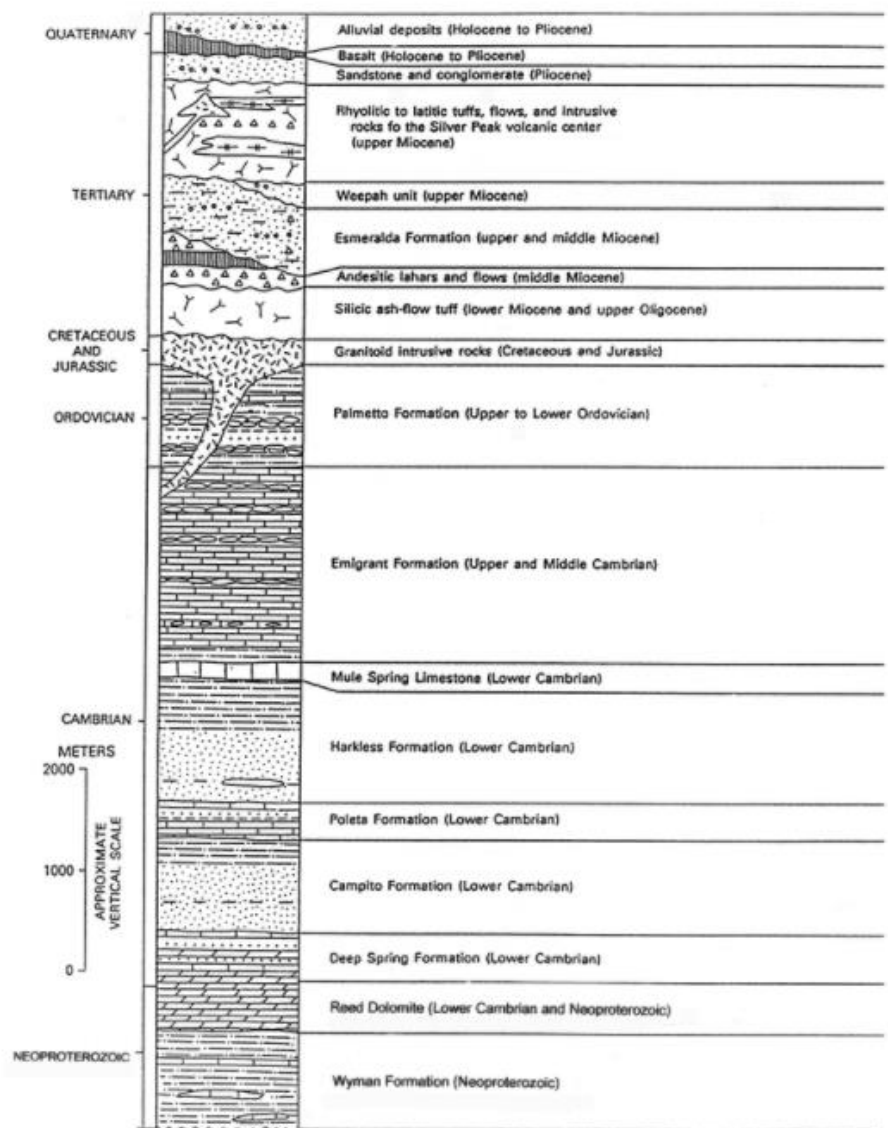
Argosy acquired 100% of Tonopah Project in August 2019, the project is located in the Big Smokey Valley region in Nevada, US. It covers an area of ~34km<sup>2</sup> near the Silver Peak Lithium Mine. AGY has conducted geophysics surveys over the area and identified lithium brine target areas in the basin. The Company has also used magnetotelluric resistivity surveys to identify a conductive anomaly and highlight a potential lithium brine aquifer 300-700m below surface. We noted in our recent [O Canada](#) report, there is a need for additional North American supply. On that basis the Tonopah project presents as an opportunity for AGY to directly target the market.

**Figure 31: Tonopah lithium project location close to Abermarles Silver Peak Mine**



Source: Company reports

**Figure 32: Stratigraphy of the Silver Peak region shows a range of sedimentary and volcanic units**

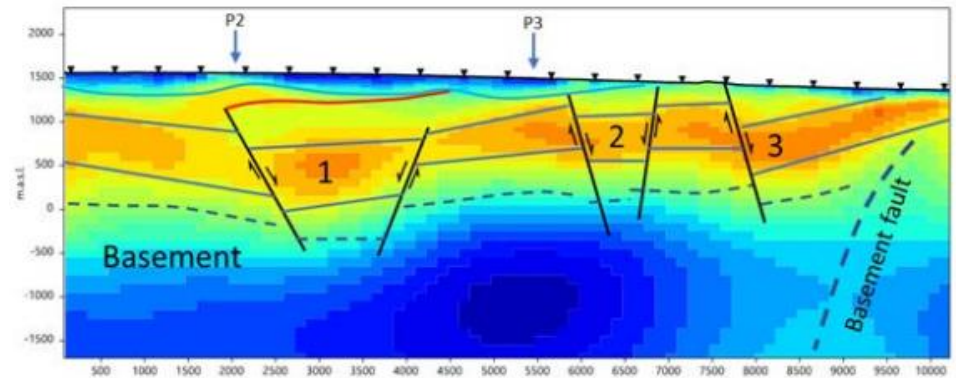


Source: Structural and Sedimentologic Evolution of a Miocene Supradetachment Basin, Silver Peak Range and Adjacent Areas, West-Central Nevada; D.Diamond; R.Ingersoll

We view the key strengths of the prospect to be that it is not conventional mining but brine extraction and there is an operational asset nearby which is owned by Albemarle. We assign a nominal \$25m (\$0.02/share) to Tonopah, however, if a resource is declared we believe it could add significant value as it would diversify Argosy's project profile.

As a background, the Silver Peak Lithium mine is owned by ALB and was developed in the 1960s. The operation produces lithium carbonate and hydroxide with ~5,000ktpa of lithium carbonate equivalent. In 2021, ALB announced it would invest US\$30-50m to double production by 2025 which would make full use of its brine water rights. Currently it is the only lithium production in the US.

**Figure 33: Magnetotelluric resistivity long section with targets**



Source: Company reports



## Valuation

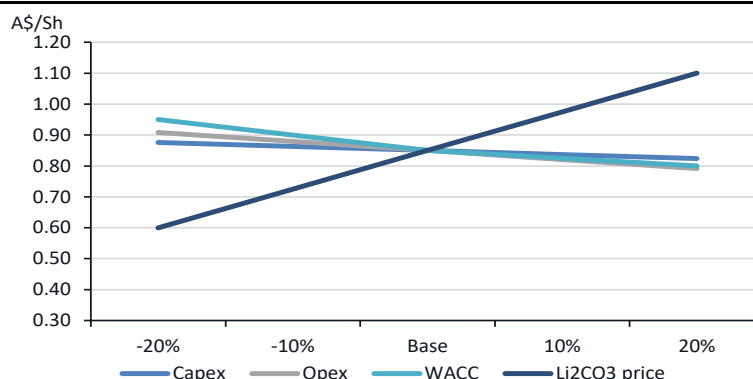
Our price target of \$0.85 is set at 50:50 risk-adjusted NPV and EV/five-year average EBITDA with a multiple of 7.5x. We use a 10% discount rate and assume a 32-year project life with costs of US\$6,543/t Li<sub>2</sub>CO<sub>3</sub> and capex of US\$306m. We use long run Li<sub>2</sub>CO<sub>3</sub> prices of US\$22,500/t and AUD/USD of 0.75. We also assign a nominal A\$25m valuation for Tonopah and A\$100m expansion potential. We value AGY at 90% ownership because our finance assumptions factor 100% commitment to financing the project, which would trigger the ownership increase from 77.5% to 90%.

**Figure 36: CGe SOTP valuation for Argosy**

Dec'23	A\$m	EQUITY	RISK ADJ.	A\$m	DILUTED/SH
Rincon	1532	90%	80%	1103	\$0.79
Tonopah	25			25	\$0.02
Expansion optionality	100			100	\$0.07
Corporate	-19			-19	-\$0.01
Net cash /(Debt)	12			12	\$0.01
<b>Total</b>				<b>1220</b>	<b>\$0.88</b>
Rincon		5 yr ave EBITDA	Multiple		
		152	7.5	1142	\$0.82
				NAV 50%	\$0.44
				EV/EBITDA 50%	\$0.41
<b>TOTAL</b>				<b>Target</b>	<b>A\$0.85</b>

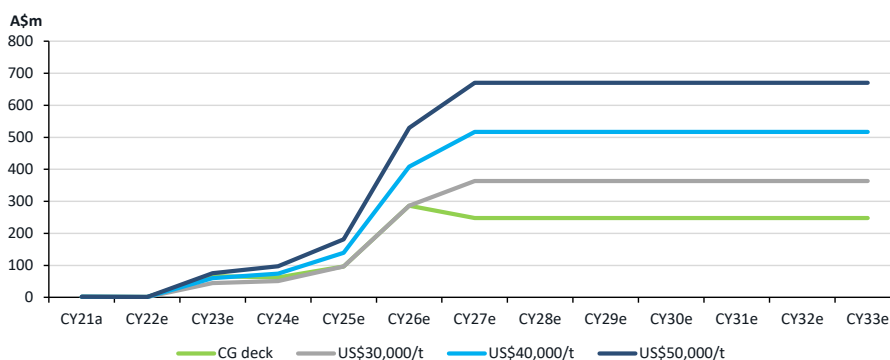
Source: Canaccord Genuity estimates

**Figure 36: Key sensitivity for Argosy**



Source: Canaccord Genuity estimates

**Figure 36: EBITDA sensitivity to changes in lithium prices**



Source: Company reports, Canaccord Genuity estimates

## Board of directors and senior management

### **Non-Executive Chairman – Mal Randall**

Mr Randall has more than 45 years of experience in corporate, management and marketing in the resources sector and holds a Bachelor of Applied Chemistry. He worked at Rio Tinto for 25 years and is currently working at Kalium Lakes, Thundelarra, Summit Resources and Magnetite Mines. Prior to this he worked at Consolidated Minerals, Titan Resources, Northern Mining, Iron Ore Holdings, United Minerals Corporation and MZI Resources.

### **Managing Director – Jerko Zuvela**

Mr Zuvela is a geologist with over 20 years of experience in the mining and resources industry. He currently serves as a director of Discovery Africa. He has held various executive management roles for private and public resources companies. Previously he worked as a Managing Director at Indicoal Mining Australia, Technical Director at OZ Coal, General Manager at Strike Resources and Alara Resources, and Chief Geologist at Fireside Resources. He is a Chartered Professional (Geology) Member of the Australasian Institute of Mining and Metallurgy. He holds a Bachelor of Science in Applied Geology from Curtin University in Western Australia.

### **President, Puna Mining SA – Pablo Alurralde**

Mr Alurralde is President of Puna Mining SA, a subsidiary of Argosy, and holds a degree in Chemical Engineering from Salta National University in Argentina. Mr Alurralde has an extensive background (19+ years of lithium processing) in lithium extraction and refining having served as Engineering and Technology manager at FMC (now Livent) and >30 years' experience designing chemical processes. Mr Alurralde was listed as the first inventor for "Recovery of Lithium values from sodium saturated brine" and has been responsible for the design and execution of lithium production from Rincon brine and for project execution in country.

### **Non-Executive Director – Bruce McFadzean**

Mr McFadzean has more than 40 years of experience in the global resources industry and a qualified mining engineer. Prior to this, he was the Managing Director of Sheffield Resources. He also worked in BHP Billiton and Rio Tinto in a variety of positions, and spent four years as Managing Director of Catalpa Resources.

### **Non-Executive Director – Peter De Leo**

Mr De Leo has more than 30 years of experience in engineering and construction within the resources and infrastructure sectors and is a Fellow of the Institute of Engineers Australia. Currently he is the Managing Director of Lycopodium.

### **Company Secretary – Andrea Betti**

Ms Betti has over 18 years of experience in accounting, corporate governance, finance and corporate banking. She was Chief Financial Officer and Assistant Company Secretary for private and public companies and held senior executive roles in the banking and finance industry. She holds a Bachelor of Commerce, Graduate Diploma in Corporate Governance, Graduate Diploma in Applied Finance and Investment and a Master of Business Administration.

## Risks

### Financing risks

As a pre-production company with no material income, AGY is reliant on existing cash, and potentially equity and debt markets to fund development of its assets and the continuing business development activities. There are no guarantees that profitability of Stage 2 – 2ktpa plant will result in a positive investment decision for the construction of Stage 3 -10ktpa plant. Further, we can make no assurances that accessing these markets will be done without further dilution to shareholders.

### Exploration risks

Exploration is subject to a number of risks and can require a high rate of capital expenditure. Risks can also be associated with conversion of inferred resources and lack of accuracy in the interpretation of geochemical, geophysical, drilling and other data. No assurances can be given that exploration will delineate further mineral resources or that the company will be able to convert the current mineral resource into minable reserves or that grades of current resources will be delivered.

### Development risks

Developing lithium operations comes with a set of risks associated with the timing, permitting and cost of a project. Delays due to equipment, labour, weather or pandemics occur and can draw down on contingency allowances provisioned by the company. Failure of critical equipment in the commissioning stage can occur and further delay projects.

### Operating risks

If and when in production, the company will be subject to risks such as plant/equipment breakdowns, metallurgical (meeting design recoveries within a complex flowsheet), materials handling and other technical issues. An increase in operating costs could reduce the profitability and free cash generation from the operating assets considerably, and negatively impact valuation. Further, the actual characteristics of a deposit may differ significantly from initial interpretations, which can also materially impact forecast production from original expectations.

### Commodity price and currency fluctuations

As with any mining company, AGY is directly exposed to commodity price and currency fluctuations. Commodity price fluctuations are driven by many macroeconomic forces including inflationary pressures, interest rates and supply and demand factors. These factors could reduce the profitability and prospective outlook for the business.

## Financial summary

### Argosy Minerals Limited

Analyst : Tim Hoff  
Date: 21/10/2022  
Year End: December

ASX:AGY

Rating: Speculative Buy  
Target Price: A\$0.85

#### Market Information

Share Price	A\$	0.54
Market Capitalisation	A\$m	750
12 Month Hi	A\$	0.61
12 Month Lo	A\$	0.22
Issued Capital	m	1389
ITM Options	m	0
Fully Diluted	m	1389

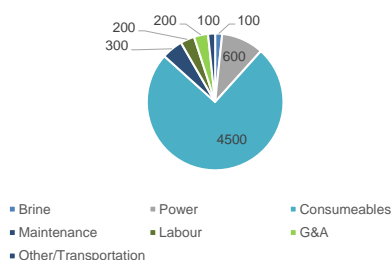
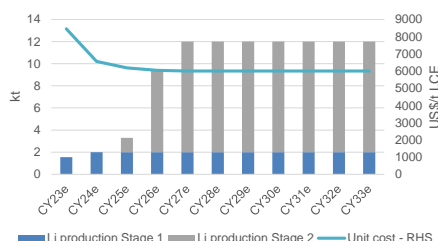
Valuation	A\$m	Risk	A\$m	A\$/share
Rincon	1532	80%	1103	0.79
Tonopah	25		25	0.02
Expansion optionality	100		100	0.07
Corporate	-19		-19	(0.01)
Net cash /(Debt)	12		12	0.01
Total	1649		1220	0.88

5 yr ave EBITDA	152	Multiple	1142	0.82
NAV 50%		8		0.44
EV/EBITDA 50%				0.41
Target				0.85

Assumptions	2021a	2022e	2023e	2024e
Lithium Carbonate (US\$/t)	19,287	60,061	48,750	35,000
Potash	350	350	350	350
Magnesium Hydroxide	250	250	250	250
AUD:USD	0.74	0.69	0.65	0.66

Production Metrics	2021a	2022e	2023e	2024e
<b>Rincon</b>				
Lithium Carbonate (kt)	0.0	0.0	0.0	0.0
AISC (US\$/t)	0.0	0.0	10,825.4	8,573.6

Reserves & Resources	Brine mm3	Li grade (mg/L)	LCE (kt)
<b>Rincon</b>			
Resources	144	325	245



#### Company Description

Argosy Minerals Limited (ASX:AGY) is developing Rincon Lithium Project, located in Salar del Rincon, Salta Province, Argentina. AGY owns 77.5% interest in Rincon lithium project, with the right to increase to 90% ownership. AGY is developing 2000tpa lithium plant with the first production planned in mid 2022.

Profit & Loss (A\$m)	2021a	2022e	2023e	2024e	2025e	2026e
Revenue	0.1	0.1	86.8	82.7	129.1	371.7
Operating Costs	0.0	0.0	-15.2	-15.5	-26.6	-74.8
Royalty	0.0	0.0	-1.7	-1.7	-2.6	-7.4
Corporate & O'heads	-1.3	-2.5	-3.0	-3.0	-3.0	-3.0
Exploration (Expensed)	-0.0	-0.1	0.0	0.0	0.0	0.0
<b>EBITDA</b>	<b>2.0</b>	<b>1.2</b>	<b>66.8</b>	<b>62.5</b>	<b>96.9</b>	<b>286.5</b>
Dep'n	-0.0	-0.0	-17.6	-22.4	-40.9	-117.7
Net Interest	0.0	0.0	0.0	0.0	0.0	0.0
Other	0.0	0.0	0.0	0.0	0.0	0.0
Tax	0.0	0.0	-14.7	-12.0	-16.8	-50.6
NPAT (reported)	2.0	1.2	34.4	28.1	39.2	118.2
Abnormals	0.0	0.0	0.0	0.0	0.0	0.0
<b>NPAT</b>	<b>2.0</b>	<b>1.2</b>	<b>34.4</b>	<b>28.1</b>	<b>39.2</b>	<b>118.2</b>
EBITDA Margin	1839%	1202%	77%	76%	75%	77%
<b>EV/EBITDA</b>	<b>323.5x</b>	<b>590.9x</b>	<b>11.1x</b>	<b>13.5x</b>	<b>9.0x</b>	<b>2.2x</b>
EPS	\$0.17	\$0.09	\$2.49	\$1.92	\$2.63	\$7.93
EPS Growth	#DIV/0!	#DIV/0!	-923%	1027%	2878%	219%
PER	317.6x	610.4x	21.7x	28.2x	20.5x	6.8x
Dividend Per Share	\$0.00	\$0.00	\$0.00	\$0.00	\$0.00	\$0.00
<b>Dividend Yield</b>	<b>0%</b>	<b>0%</b>	<b>0%</b>	<b>0%</b>	<b>0%</b>	<b>0%</b>
Cash Flow (A\$m)	2021a	2022e	2023e	2024e	2025e	2026e
Cash Receipts	0.1	0.0	86.8	82.7	129.1	371.7
Cash paid to suppliers & employees	-1.5	-2.4	-20.0	-20.2	-32.2	-85.2
Exploration and Evaluation	-0.6	-0.4	0.0	0.0	0.0	0.0
Tax Paid	0.0	0.0	-14.7	-12.0	-16.8	-50.6
+/- Other -working cap change	0.0	0.0	0.0	0.0	0.0	0.0
<b>Operating Cash Flow</b>	<b>-2.0</b>	<b>-2.7</b>	<b>52.0</b>	<b>50.5</b>	<b>80.1</b>	<b>235.9</b>
Capex	0.0	-11.6	-87.1	-199.1	-102.5	-5.4
Other	-10.0	-6.3	0.0	0.0	0.0	0.0
<b>Investing Cash Flow</b>	<b>-10.0</b>	<b>-17.8</b>	<b>-87.1</b>	<b>-199.1</b>	<b>-102.5</b>	<b>-5.4</b>
Debt Drawdown (repayment)	0.0	0.0	100.0	50.0	0.0	0.0
Net interest expense	0.0	0.0	0.0	0.0	0.0	0.0
Equity Issue	34.1	20.3	25.0	100.0	0.0	0.0
Dividends	0.0	0.0	0.0	0.0	0.0	0.0
Financing Expenses	-2.0	-0.1	-1.3	-5.0	0.0	0.0
<b>Financing Cash Flow</b>	<b>32.2</b>	<b>20.2</b>	<b>123.8</b>	<b>145.0</b>	<b>0.0</b>	<b>0.0</b>
Opening Cash	2.9	23.1	23.0	111.6	108.0	85.7
Increase / (Decrease) in cash	20.1	-0.4	88.7	-3.6	-22.4	230.5
FX Impact	0.1	0.2	0.0	0.0	0.0	0.0
<b>Closing Cash</b>	<b>23.1</b>	<b>23.0</b>	<b>111.6</b>	<b>108.0</b>	<b>85.7</b>	<b>316.2</b>
Op. Cashflow/Share	\$0.00	\$0.00	\$0.04	\$0.03	\$0.05	\$0.16
P/CF	-335.8x	-272.0x	14.4x	15.9x	10.0x	3.4x
<b>EV/FCF</b>	<b>nm</b>	<b>nm</b>	<b>nm</b>	<b>nm</b>	<b>nm</b>	<b>nm</b>
<b>FCF Yield</b>	<b>-2%</b>	<b>-3%</b>	<b>-5%</b>	<b>-20%</b>	<b>-3%</b>	<b>31%</b>
Balance Sheet (A\$m)	2021a	2022e	2023e	2024e	2025e	2026e
Cash + S/Term Deposits	23.1	23.0	111.6	108.0	85.7	316.2
Other current assets	0.1	0.2	0.2	0.2	0.2	0.2
<b>Current Assets</b>	<b>23.2</b>	<b>23.2</b>	<b>111.9</b>	<b>108.2</b>	<b>85.9</b>	<b>316.4</b>
Property, Plant & Equip.	0.0	17.8	87.3	263.9	325.5	213.2
Exploration & Develop.	3.0	3.3	3.3	3.3	3.3	3.3
Other Non-current Assets	30.8	30.8	30.8	30.8	30.8	30.8
Payables	0.2	-3.4	-3.4	-3.4	-3.4	-3.4
Short Term Debt	0.0	0.0	100.0	150.0	150.0	150.0
Long Term Debt	0.0	0.0	0.0	0.0	0.0	0.0
Other Liabilities	0.1	0.1	0.1	0.1	0.1	0.1
<b>Net Assets</b>	<b>56.7</b>	<b>78.3</b>	<b>136.5</b>	<b>259.5</b>	<b>298.8</b>	<b>416.9</b>
Shareholders Funds	121.2	141.3	165.1	260.1	260.1	260.1
Reserves	4.2	4.2	4.2	4.2	4.2	4.2
Retained Earnings	-68.6	-67.2	-32.8	-4.7	34.5	152.7
<b>Total Equity</b>	<b>56.7</b>	<b>78.3</b>	<b>136.5</b>	<b>259.5</b>	<b>298.8</b>	<b>416.9</b>
Debt/Equity	0%	0%	0%	0%	0%	0%
Net Debt/EBITDA	11.3x	8.5x	-0.2x	0.8x	0.8x	-0.7x
Net Interest Cover	nm	nm	nm	nm	nm	nm
ROE	4%	2%	25%	11%	13%	28%
ROIC	6%	2%	29%	10%	11%	48%
Book Value/share	\$0.04	\$0.06	\$0.10	\$0.17	\$0.20	\$0.28
Net Debt	-23.1	-23.0	-11.6	42.0	64.3	-166.2

Source: Company reports, Canaccord Genuity estimates

# Appendix: Important Disclosures

## Analyst Certification

Each authoring analyst of Canaccord Genuity whose name appears on the front page of this research hereby certifies that (i) the recommendations and opinions expressed in this research accurately reflect the authoring analyst's personal, independent and objective views about any and all of the designated investments or relevant issuers discussed herein that are within such authoring analyst's coverage universe and (ii) no part of the authoring analyst's compensation was, is, or will be, directly or indirectly, related to the specific recommendations or views expressed by the authoring analyst in the research, and (iii) to the best of the authoring analyst's knowledge, she/he is not in receipt of material non-public information about the issuer.

Analysts employed outside the US are not registered as research analysts with FINRA. These analysts may not be associated persons of Canaccord Genuity LLC and therefore may not be subject to the FINRA Rule 2241 and NYSE Rule 472 restrictions on communications with a subject company, public appearances and trading securities held by a research analyst account.

## Sector Coverage

Individuals identified as "Sector Coverage" cover a subject company's industry in the identified jurisdiction, but are not authoring analysts of the report.

## Investment Recommendation

Date and time of first dissemination: October 23, 2022, 15:30 ET

Date and time of production: October 21, 2022, 05:48 ET

## Target Price / Valuation Methodology:

Argosy Minerals Limited - AGY

Our price target is based on a 50:50 NPV10% for Rincon, which are risked according to project stage and a five-year average EV/EBITDA of 7.5x. We use US\$22,500/t LC, AUD/USD 0.75 and 10% discount rate in our NPV calculation. Exploration value is assigned to resource conversion and additional discovery.

## Risks to achieving Target Price / Valuation:

Argosy Minerals Limited - AGY

## Financing risks

As a pre-production company with no material income, AGY is reliant on existing cash, and potentially equity and debt markets to fund development of its assets and the continuing business development activities. There are no guarantees that profitability of Stage 2 - 2ktpa plant will result in a positive investment decision for the construction of Stage 3 -10ktpa plant. Further, we can make no assurances that accessing these markets will be done without further dilution to shareholders.

## Exploration risks

Exploration is subject to a number of risks and can require a high rate of capital expenditure. Risks can also be associated with conversion of inferred resources and lack of accuracy in the interpretation of geochemical, geophysical, drilling and other data. No assurances can be given that exploration will delineate further mineral resources or that the company will be able to convert the current mineral resource into minable reserves or that grades of current resources will be delivered.

## Development risks

Developing lithium operations comes with a set of risks associated with the timing, permitting and cost of a project. Delays due to equipment, labour, weather or pandemics occur and can draw down on contingency allowances provisioned by the company. Failure of critical equipment in the commissioning stage can occur and further delay projects.

## Operating risks

If and when in production, the company will be subject to risks such as plant/equipment breakdowns, metallurgical (meeting design recoveries within a complex flow sheet), materials handling and other technical issues. An increase in operating costs could reduce the profitability and free cash generation from the operating assets considerably, and negatively impact valuation. Further, the actual characteristics of an ore deposit may differ significantly from initial interpretations, which can also materially impact forecast production from original expectations.

## Commodity price and currency fluctuations

As with any mining company, AGY is directly exposed to commodity price and currency fluctuations. Commodity price fluctuations are driven by many macroeconomic forces including inflationary pressures, interest rates and supply and demand factors. These factors could reduce the profitability, costing and prospective outlook for the business.

## Distribution of Ratings:

### Global Stock Ratings (as of 10/23/22)

Rating	Coverage Universe		IB Clients
	#	%	%
Buy	634	67.02%	30.44%
Hold	133	14.06%	18.80%
Sell	14	1.48%	7.14%
Speculative Buy	157	16.60%	41.40%
	946*	100.0%	

\*Total includes stocks that are Under Review

## Canaccord Genuity Ratings System

**BUY:** The stock is expected to generate risk-adjusted returns of over 10% during the next 12 months.

**HOLD:** The stock is expected to generate risk-adjusted returns of 0-10% during the next 12 months.

**SELL:** The stock is expected to generate negative risk-adjusted returns during the next 12 months.

**NOT RATED:** Canaccord Genuity does not provide research coverage of the relevant issuer.

"Risk-adjusted return" refers to the expected return in relation to the amount of risk associated with the designated investment or the relevant issuer.

## Risk Qualifier

**SPECULATIVE:** Stocks bear significantly higher risk that typically cannot be valued by normal fundamental criteria. Investments in the stock may result in material loss.

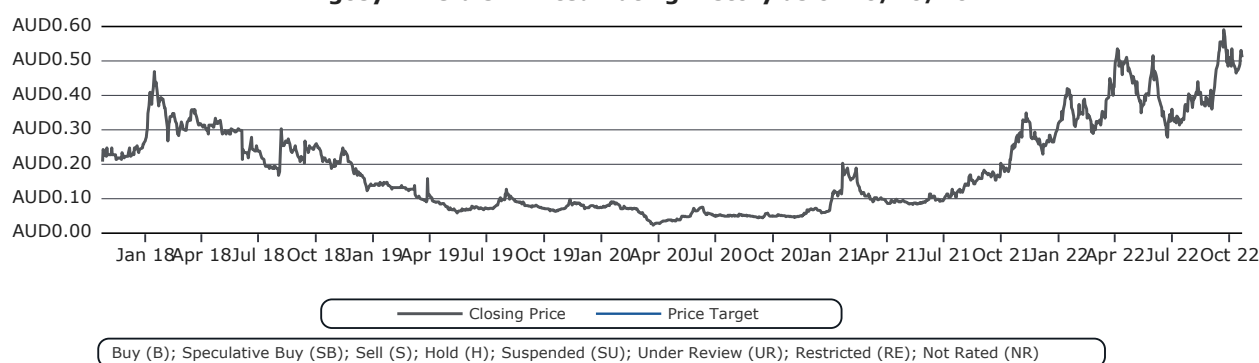
## 12-Month Recommendation History (as of date same as the Global Stock Ratings table)

A list of all the recommendations on any issuer under coverage that was disseminated during the preceding 12-month period may be obtained at the following website (provided as a hyperlink if this report is being read electronically) <http://disclosures-mar.canaccordgenuity.com/EN/Pages/default.aspx>

## Required Company-Specific Disclosures (as of date of this publication)

Canaccord Genuity or one or more of its affiliated companies intend to seek or expect to receive compensation for Investment Banking services from Argosy Minerals Limited in the next three months.

### Argosy Minerals Limited Rating History as of 10/20/2022



## Required Company-Specific Disclosures (as of date of this publication)

### Past performance

In line with Article 44(4)(b), MiFID II Delegated Regulation, we disclose price performance for the preceding five years or the whole period for which the financial instrument has been offered or investment service provided where less than five years. Please note price history refers to actual past performance, and that past performance is not a reliable indicator of future price and/or performance.

### Online Disclosures



Up-to-date disclosures may be obtained at the following website (provided as a hyperlink if this report is being read electronically) <http://disclosures.canaccordgenuity.com/EN/Pages/default.aspx>; or by sending a request to Canaccord Genuity Corp. Research, Attn: Disclosures, P.O. Box 10337 Pacific Centre, 2200-609 Granville Street, Vancouver, BC, Canada V7Y 1H2; or by sending a request by email to [disclosures@cgf.com](mailto:disclosures@cgf.com). The reader may also obtain a copy of Canaccord Genuity's policies and procedures regarding the dissemination of research by following the steps outlined above.

### General Disclaimers

See "Required Company-Specific Disclosures" above for any of the following disclosures required as to companies referred to in this report: manager or co-manager roles; 1% or other ownership; compensation for certain services; types of client relationships; research analyst conflicts; managed/co-managed public offerings in prior periods; directorships; market making in equity securities and related derivatives. For reports identified above as compendium reports, the foregoing required company-specific disclosures can be found in a hyperlink located in the section labeled, "Compendium Reports." "Canaccord Genuity" is the business name used by certain wholly owned subsidiaries of Canaccord Genuity Group Inc., including Canaccord Genuity LLC, Canaccord Genuity Limited, Canaccord Genuity Corp., and Canaccord Genuity (Australia) Limited, an affiliated company that is 80%-owned by Canaccord Genuity Group Inc.

The authoring analysts who are responsible for the preparation of this research are employed by Canaccord Genuity Corp. a Canadian broker-dealer with principal offices located in Vancouver, Calgary, Toronto, Montreal, or Canaccord Genuity LLC, a US broker-dealer with principal offices located in New York, Boston, San Francisco and Houston, or Canaccord Genuity Limited., a UK broker-dealer with principal offices located in London (UK) and Dublin (Ireland), or Canaccord Genuity (Australia) Limited, an Australian broker-dealer with principal offices located in Sydney and Melbourne.

The authoring analysts who are responsible for the preparation of this research have received (or will receive) compensation based upon (among other factors) the Investment Banking revenues and general profits of Canaccord Genuity. However, such authoring analysts have not received, and will not receive, compensation that is directly based upon or linked to one or more specific Investment Banking activities, or to recommendations contained in the research.

Some regulators require that a firm must establish, implement and make available a policy for managing conflicts of interest arising as a result of publication or distribution of research. This research has been prepared in accordance with Canaccord Genuity's policy on managing conflicts of interest, and information barriers or firewalls have been used where appropriate. Canaccord Genuity's policy is available upon request.

The information contained in this research has been compiled by Canaccord Genuity from sources believed to be reliable, but (with the exception of the information about Canaccord Genuity) no representation or warranty, express or implied, is made by Canaccord Genuity, its affiliated companies or any other person as to its fairness, accuracy, completeness or correctness. Canaccord Genuity has not independently verified the facts, assumptions, and estimates contained herein. All estimates, opinions and other information contained in this research constitute Canaccord Genuity's judgement as of the date of this research, are subject to change without notice and are provided in good faith but without legal responsibility or liability.

From time to time, Canaccord Genuity salespeople, traders, and other professionals provide oral or written market commentary or trading strategies to our clients and our principal trading desk that reflect opinions that are contrary to the opinions expressed in this research. Canaccord Genuity's affiliates, principal trading desk, and investing businesses also from time to time make investment decisions that are inconsistent with the recommendations or views expressed in this research.

This research is provided for information purposes only and does not constitute an offer or solicitation to buy or sell any designated investments discussed herein in any jurisdiction where such offer or solicitation would be prohibited. As a result, the designated investments discussed in this research may not be eligible for sale in some jurisdictions. This research is not, and under no circumstances should be construed as, a solicitation to act as a securities broker or dealer in any jurisdiction by any person or company that is not legally permitted to carry on the business of a securities broker or dealer in that jurisdiction. This material is prepared for general circulation to clients and does not have regard to the investment objectives, financial situation or particular needs of any particular person. Investors should obtain advice based on their own individual circumstances before making an investment decision. To the fullest extent permitted by law, none of Canaccord Genuity, its affiliated companies or any other person accepts any liability whatsoever for any direct or consequential loss arising from or relating to any use of the information contained in this research.

### Research Distribution Policy

Canaccord Genuity research is posted on the Canaccord Genuity Research Portal and will be available simultaneously for access by all of Canaccord Genuity's customers who are entitled to receive the firm's research. In addition research may be distributed by the firm's sales and trading personnel via email, instant message or other electronic means. Customers entitled to receive research may also receive it via third party vendors. Until such time as research is made available to Canaccord Genuity's customers as described above, Authoring Analysts will not discuss the contents of their research with Sales and Trading or Investment Banking employees without prior compliance consent.

For further information about the proprietary model(s) associated with the covered issuer(s) in this research report, clients should contact their local sales representative.

### Short-Term Trade Ideas

Research Analysts may, from time to time, discuss "short-term trade ideas" in research reports. A short-term trade idea offers a near-term view on how a security may trade, based on market and trading events or catalysts, and the resulting trading opportunity that may be available. Any such trading strategies are distinct from and do not affect the analysts' fundamental equity rating for such stocks. A short-term trade idea may differ from the price targets and recommendations in our published research reports that

reflect the research analyst's views of the longer-term (i.e. one-year or greater) prospects of the subject company, as a result of the differing time horizons, methodologies and/or other factors. It is possible, for example, that a subject company's common equity that is considered a long-term 'Hold' or 'Sell' might present a short-term buying opportunity as a result of temporary selling pressure in the market or for other reasons described in the research report; conversely, a subject company's stock rated a long-term 'Buy' or 'Speculative Buy' could be considered susceptible to a downward price correction, or other factors may exist that lead the research analyst to suggest a sale over the short-term. Short-term trade ideas are not ratings, nor are they part of any ratings system, and the firm does not intend, and does not undertake any obligation, to maintain or update short-term trade ideas. Short-term trade ideas are not suitable for all investors and are not tailored to individual investor circumstances and objectives, and investors should make their own independent decisions regarding any securities or strategies discussed herein. Please contact your salesperson for more information regarding Canaccord Genuity's research.

#### **For Canadian Residents:**

This research has been approved by Canaccord Genuity Corp., which accepts sole responsibility for this research and its dissemination in Canada. Canaccord Genuity Corp. is registered and regulated by the Investment Industry Regulatory Organization of Canada (IIROC) and is a Member of the Canadian Investor Protection Fund. Canadian clients wishing to effect transactions in any designated investment discussed should do so through a qualified salesperson of Canaccord Genuity Corp. in their particular province or territory.

#### **For United States Persons:**

Canaccord Genuity LLC, a US registered broker-dealer, accepts responsibility for this research and its dissemination in the United States. This research is intended for distribution in the United States only to certain US institutional investors. US clients wishing to effect transactions in any designated investment discussed should do so through a qualified salesperson of Canaccord Genuity LLC. Analysts employed outside the US, as specifically indicated elsewhere in this report, are not registered as research analysts with FINRA. These analysts may not be associated persons of Canaccord Genuity LLC and therefore may not be subject to the FINRA Rule 2241 and NYSE Rule 472 restrictions on communications with a subject company, public appearances and trading securities held by a research analyst account.

#### **For United Kingdom and European Residents:**

This research is distributed in the United Kingdom and elsewhere Europe, as third party research by Canaccord Genuity Limited, which is authorized and regulated by the Financial Conduct Authority. This research is for distribution only to persons who are Eligible Counterparties or Professional Clients only and is exempt from the general restrictions in section 21 of the Financial Services and Markets Act 2000 on the communication of invitations or inducements to engage in investment activity on the grounds that it is being distributed in the United Kingdom only to persons of a kind described in Article 19(5) (Investment Professionals) and 49(2) (High Net Worth companies, unincorporated associations etc) of the Financial Services and Markets Act 2000 (Financial Promotion) Order 2005 (as amended). It is not intended to be distributed or passed on, directly or indirectly, to any other class of persons. This material is not for distribution in the United Kingdom or elsewhere in Europe to retail clients, as defined under the rules of the Financial Conduct Authority.

#### **For Jersey, Guernsey and Isle of Man Residents:**

This research is sent to you by Canaccord Genuity Wealth (International) Limited (CGWI) for information purposes and is not to be construed as a solicitation or an offer to purchase or sell investments or related financial instruments. This research has been produced by an affiliate of CGWI for circulation to its institutional clients and also CGWI. Its contents have been approved by CGWI and we are providing it to you on the basis that we believe it to be of interest to you. This statement should be read in conjunction with your client agreement, CGWI's current terms of business and the other disclosures and disclaimers contained within this research. If you are in any doubt, you should consult your financial adviser.

CGWI is licensed and regulated by the Guernsey Financial Services Commission, the Jersey Financial Services Commission and the Isle of Man Financial Supervision Commission. CGWI is registered in Guernsey and is a wholly owned subsidiary of Canaccord Genuity Group Inc.

#### **For Australian Residents:**

This research is distributed in Australia by Canaccord Genuity (Australia) Limited ABN 19 075 071 466 holder of AFS Licence No 234666. To the extent that this research contains any advice, this is limited to general advice only. Recipients should take into account their own personal circumstances before making an investment decision. Clients wishing to effect any transactions in any financial products discussed in the research should do so through a qualified representative of Canaccord Genuity (Australia) Limited or its Wealth Management affiliated company, Canaccord Genuity Financial Limited ABN 69 008 896 311 holder of AFS Licence No 239052.

#### **For Hong Kong Residents:**

This research is distributed in Hong Kong by Canaccord Genuity (Hong Kong) Limited which is licensed by the Securities and Futures Commission. This research is only intended for persons who fall within the definition of professional investor as defined in the Securities and Futures Ordinance. It is not intended to be distributed or passed on, directly or indirectly, to any other class of persons. Recipients of this report can contact Canaccord Genuity (Hong Kong) Limited. (Contact Tel: +852 3919 2561) in respect of any matters arising from, or in connection with, this research.

#### **Additional information is available on request.**

Copyright © Canaccord Genuity Corp. 2022 – Member IIROC/Canadian Investor Protection Fund

Copyright © Canaccord Genuity Limited. 2022 – Member LSE, authorized and regulated by the Financial Conduct Authority.

Copyright © Canaccord Genuity LLC 2022 – Member FINRA/SIPC

Copyright © Canaccord Genuity (Australia) Limited. 2022 – Participant of ASX Group, Chi-x Australia and of the NSX. Authorized and regulated by ASIC.

All rights reserved. All material presented in this document, unless specifically indicated otherwise, is under copyright to Canaccord Genuity Corp., Canaccord Genuity Limited, Canaccord Genuity LLC or Canaccord Genuity Group Inc. None of the material, nor its content, nor any copy of it, may be altered in any way, or transmitted to or distributed to any other party, without the prior express written permission of the entities listed above.

**None of the material, nor its content, nor any copy of it, may be altered in any way, reproduced, or distributed to any other party including by way of any form of social media, without the prior express written permission of the entities listed above.**